

CANYON LAKES - PLAT TWO

106

BEING A REPLAT OF A PORTION OF TRACTS 81 THROUGH 84, AND A PORTION OF A ROAD, DYKE AND DITCH RESERVATION, 30.00 FEET IN WIDTH, ALL LYING WITHIN BLOCK 54, PALM BEACH FARMS COMPANY PLAT NO. 3, ACCORDING TO THE PLAT THEREOF, AS RECORDED IN PLAT BOOK 2, PAGES 45 THROUGH 54, OF THE PUBLIC RECORDS, PALM BEACH COUNTY, FLORIDA

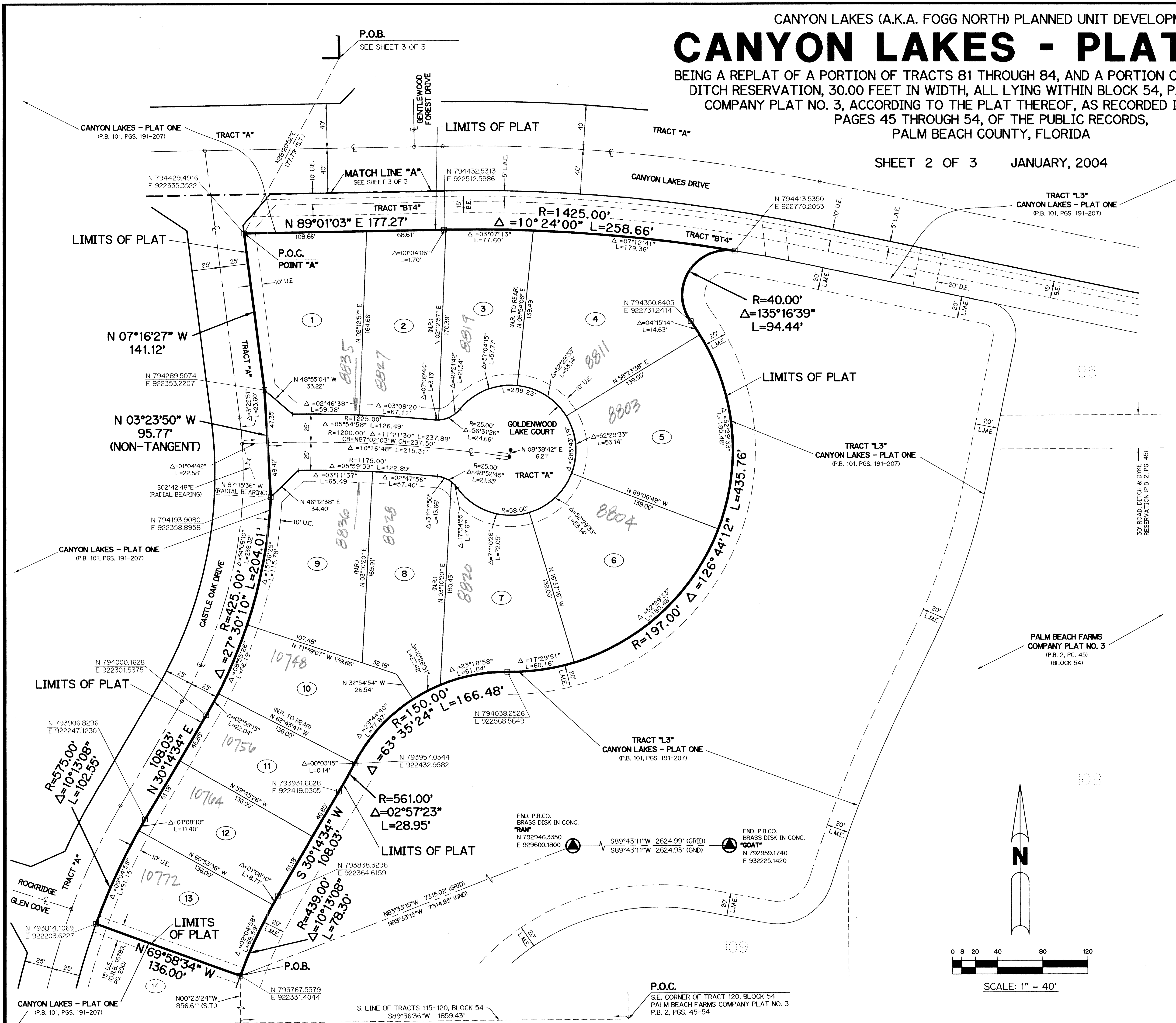
SHEET 2 OF 3 JANUARY, 2004

NOTE:

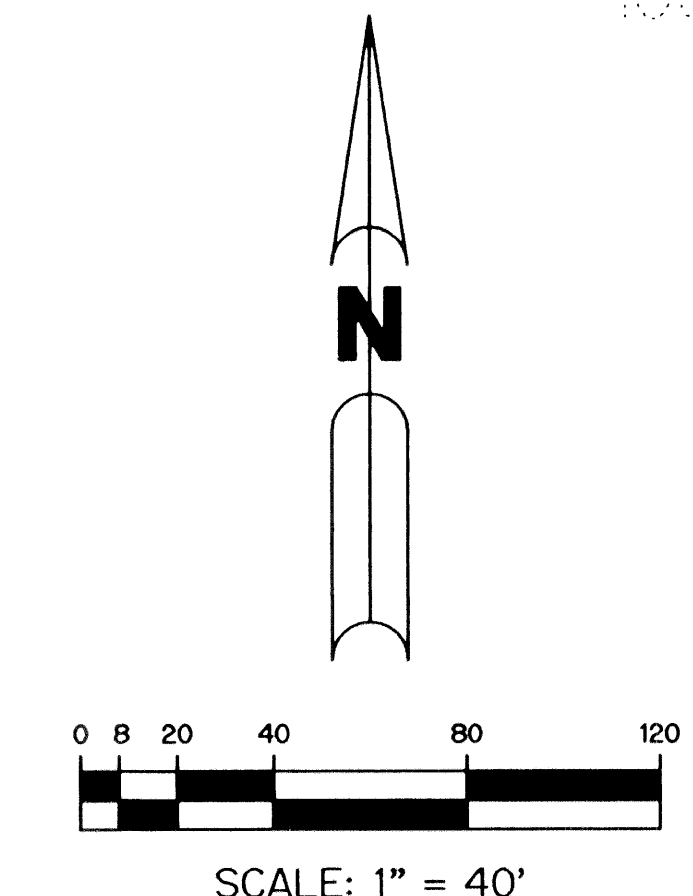
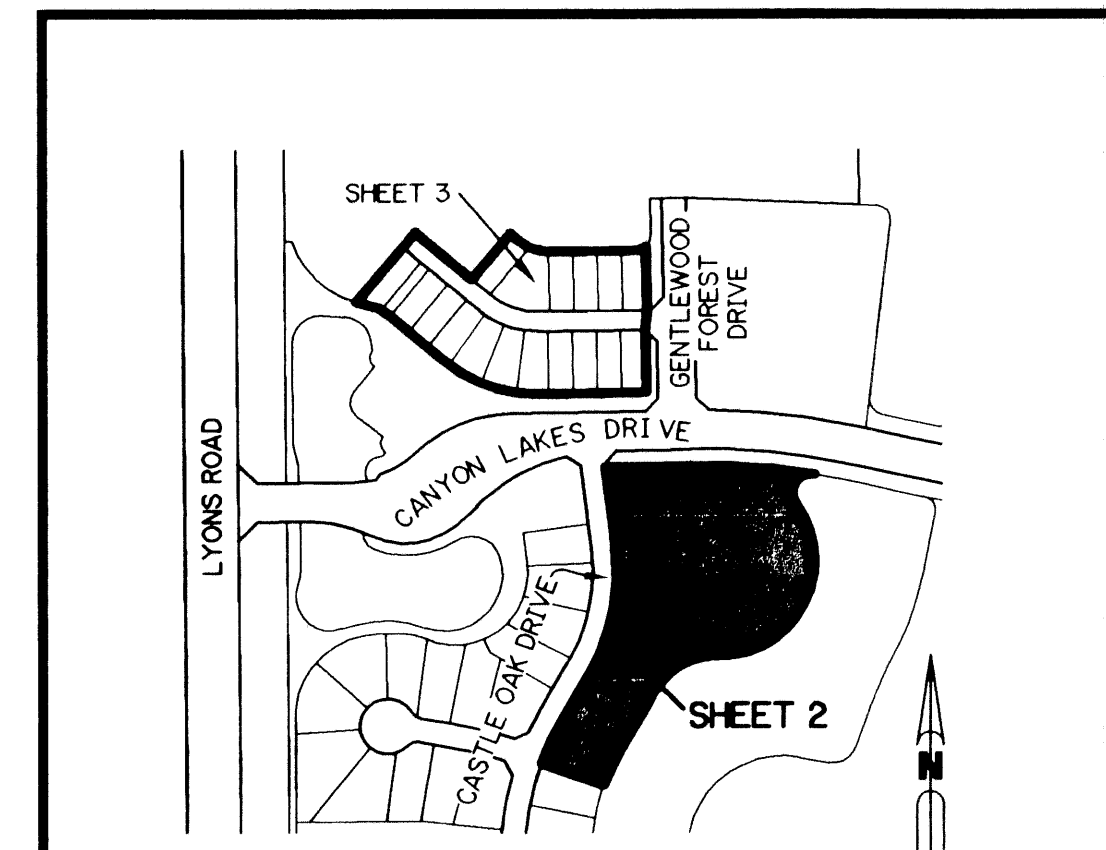
COORDINATES SHOWN ARE GRID COORDINATES DATUM = NAD 83, 1990 ADJUSTMENT AS READJUSTED BY PALM BEACH COUNTY IN 1998
ZONE = FLORIDA EAST ZONE
LINEAR UNIT = U.S. SURVEY FEET
COORDINATE SYSTEM = 1983 STATE PLANE TRANSVERSE MERCATOR PROJECTION
ALL DISTANCES ARE GROUND
SCALE FACTOR = 1.0000227
PLAT BEARING = GRID BEARING
NO ROTATION

LEGEND:

- - SET PERMANENT REFERENCE MONUMENT, L.B. #6674
- - FOUND PERMANENT REFERENCE MONUMENT, L.B. #6674
- - SET PERMANENT CONTROL POINT, L.B. #6674
- - FOUND PERMANENT CONTROL POINT, L.B. #6674
- △ - DELTA ANGLE
- B.E. - BUFFER EASEMENT
- CB - CHORD BEARING
- CH - CHORD DISTANCE
- C - CENTERLINE
- D.B. - DEED BOOK
- D.E. - DRAINAGE EASEMENT
- GND. - GROUND
- L - ARC LENGTH
- L.A.E. - LIMITED ACCESS EASEMENT
- L.M.A.E. - LAKE MAINTENANCE ACCESS EASEMENT
- L.M.E. - LAKE MAINTENANCE EASEMENT
- L.W.D. - LAKE WORTH DRAINAGE DISTRICT
- N.R. - NOT RADIAL
- N.T.S. - NOT TO SCALE
- O.R.B. - OFFICIAL RECORD BOOK
- P.B. - PLAT BOOK
- P.C. - POINT OF CURVATURE
- P.C.P. - PERMANENT CONTROL POINT
- PGS. - PAGES
- P.O.B. - POINT OF BEGINNING
- P.O.C. - POINT OF COMMENCEMENT
- P.S.M. - PROFESSIONAL SURVEYOR AND MAPPER
- P.T. - POINT OF TANGENCY
- R - RADIUS
- RAD. - RADIAL
- R/W - RIGHT-OF-WAY
- TYP. - TYPICAL
- U.E. - UTILITY EASEMENT
- N 100000.0000
E 100000.0000 - DENOTES STATE PLANE COORDINATES



THIS INSTRUMENT PREPARED BY
PERRY C. WHITE, P.S.M. 4213, STATE OF FLORIDA
LAWSON, NOBLE AND WEBB, INC.
ENGINEERS PLANNERS SURVEYORS
420 COLUMBIA DRIVE
WEST PALM BEACH, FLORIDA 33409
LB-6674



SUBDIVISION CANYON LAKES - PLAT 2
 BOOK 102 PAGE 106
 TRACT MAP #1857
 ZONING PDD
 QUAD # 50
 ZIP CODE 33437
 TALK 744750
 PUB NAME: FOGG NORTH

CANYON LAKES - PLAT ONE (P.B. 101, PGS. 191-207)

P.O.C. S.E. CORNER OF TRACT 120, BLOCK 54 PALM BEACH FARMS COMPANY PLAT NO. 3 P.B. 2, PGS. 45-54